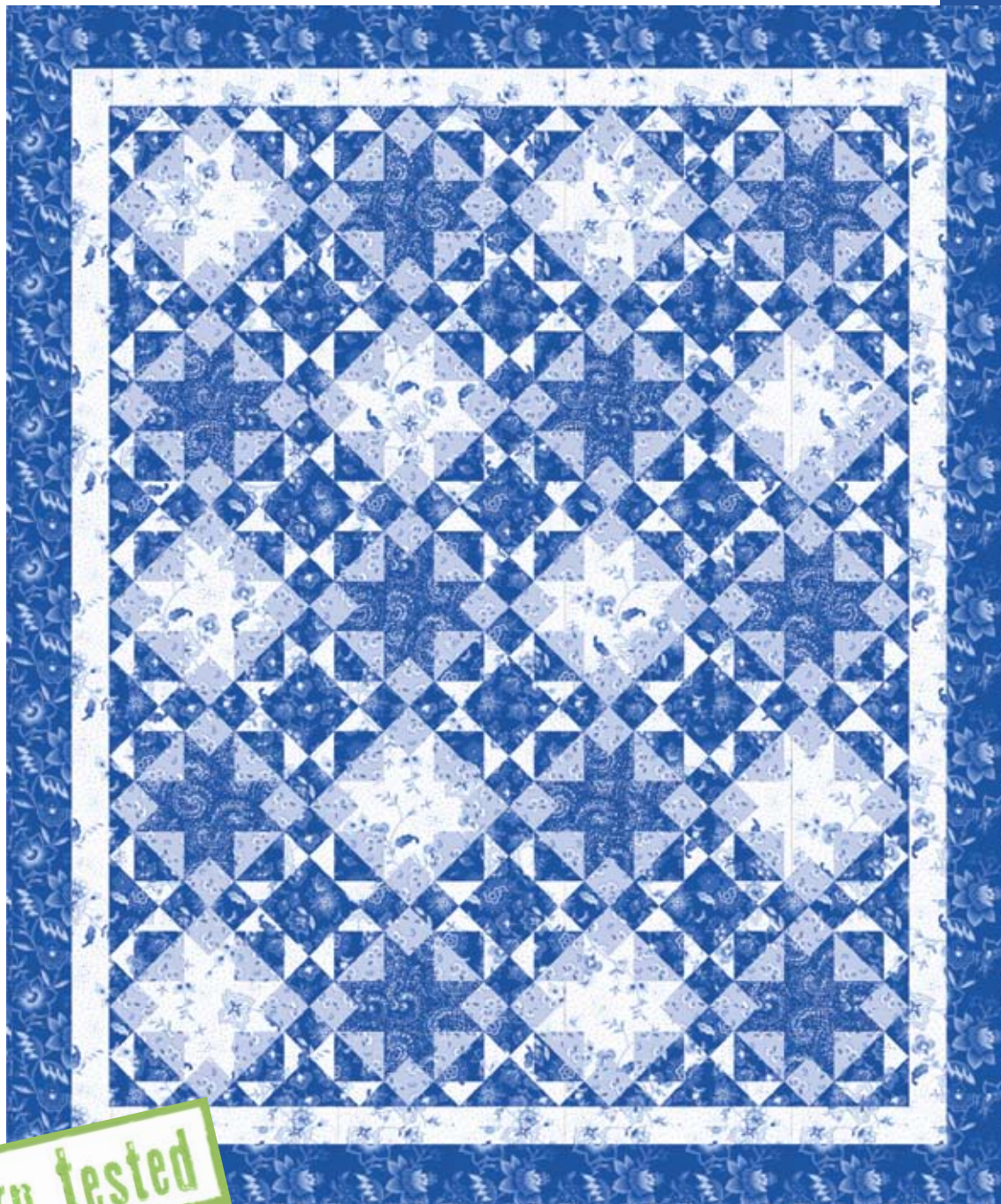


Blue Palace



pattern tested



Quilt Featuring fabrics from the

The Blue Palace collection

by Johnny Karwan

Finished size: 55" x 66 1/2"

Design by Bonnie Mitchell for Clothworks

Materials

Yardages based on 42" wide fabric

- 3/4 yd Dark Blue Large Floral (Y0138-2)
- 1-7/8 yds White Vine Floral (Y0139-1)
- 1-1/2 yds Dark Blue Medium Floral (Y0140-2)
- 1-1/4 yds Dark Blue Swirling Paisley (Y0141-2)
- 1-1/4 yds Med. Blue Small Flower Toss (Y0143-3)
- 4-1/2 yds Backing of choice

Cut the Fabrics

WOF = Width of Fabric

LOF = Length of Fabric

From Dark Blue Large Floral:

7 – 3 1/2" x WOF strips (outer border)

From White Vine Floral:

6 – 2 1/2" strips (inner border)

10 – 4 1/2" squares

240 – 2 1/2" squares

From Dark Blue Med. Floral

80 – 2 1/2" x 4 1/2" rectangles

62 – 2 1/2" squares

12 – 4 1/2" squares

4 – 7" squares-cut diagonally twice to yield 16 triangles (2 extra)

9 – 4 1/8" squares-cut diagonally twice to yield 36 triangles

2 – 3 3/4" squares-cut diagonally **once** to yield 4 triangles

From Dark Blue Swirling Paisley;

10 – 4 1/2" squares

80 – 2 1/2" squares

6 – 2 1/2" x WOF strips (binding)

From Med. Blue Small Flower Toss:

80 – 2 1/2" x 4 1/2" rectangles

80 – 2 1/2" squares

While every attempt has been made to give accurate measurements, yardage requirements, and construction directions, this does not allow for personal variations in measuring, cutting and/or sewing. Clothworks is not responsible for printing errors.

Directions

Prior to starting this project, please check our web site for any updates: www.clothworkstextiles.com.

To piece star point units:

1. Lightly mark a diagonal line with a pencil from one corner to the opposite corner on the reverse side of two 2 1/2" White Vine Floral squares. (Fig. 1)
2. Place one 2 1/2" White Vine Floral square right side down on one end of a 2 1/2" x 4 1/2" Med. Blue Small Flower Toss rectangle and sew on the line diagonally across. Trim the seam allowance to 1/4" and press toward the corner. (Fig. 2) Repeat on the other corner. (Fig. 3)
3. Repeat Steps 1 and 2 to make 40 units total of these two fabrics. Set aside for now.
4. Using 2 1/2" Dark Blue Swirling Paisley squares and 2 1/2" x 4 1/2" Med. Blue Small Flower Toss rectangles, repeat Step 2 above to make 40 units total of these two fabrics. Set aside for now.
5. Using 2 1/2" White Vine Floral squares and 2 1/2" x 4 1/2" Dark Blue Med. Floral rectangles, repeat Steps 1 and 2 above to make 80 units total of these two fabrics. Set aside for now.



Figure 1

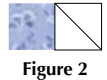


Figure 2



Figure 3

To assemble star blocks A, B and C:

1. For each star block A assemble: one 4 1/2" White Vine Floral square, four star point units from Step 2 above and four 2 1/2" Med. Blue Small Flower Toss squares. (Fig. 4)
2. Sew one star point unit to each side of the 4 1/2" square. Press seams toward the center square. Sew one 2 1/2" Med. Blue square to each end of the two remaining units. Press seams toward the squares. Sew the block together. Press seams toward the center square.
3. Repeat Steps 1 and 2 for a total of 10 star block A's.
4. For each star block B assemble: one 4 1/2" Dark Blue Swirling Paisley square, four star point units from Step 4 above and four 2 1/2" Med. Blue Small Flower Toss squares (Fig. 5).
5. Sew as in Step 2, using these fabrics. Repeat for a total of 10 block B's.
6. For each star block C assemble: one 4 1/2" Dark Blue Med. Floral square, four star point units from Step 5 above and four 2 1/2" Dark Blue Med. Floral squares. (Fig. 6)
7. Sew as in Step 2, using these fabrics. Repeat for a total of 12 block C's.

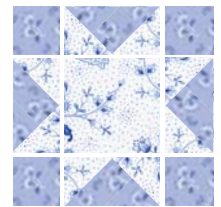


Figure 4 - Block A

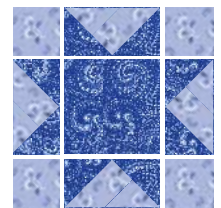


Figure 5 - Block B

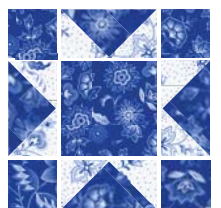


Figure 6 - Block C

To assemble setting (half blocks) and corner (quarter) blocks:

1. Assemble one large triangle (7" long edge), two star point units, two small triangles (4 1/8" long edge) and one 2 1/2" square (Fig. 7).
2. Sew one small triangle to the left end of one star point unit referring to Fig 7 for proper orientation. Press toward the small triangle. Sew the small square to the other end. Press toward the square. Sew a second small triangle to the right end of the second star point unit, again referring to Fig 7. Press toward the star point unit.
3. Sew the star point unit (without the square) to the right short edge of the large triangle. Press toward the large triangle. Sew the star point unit with the square to the other short edge completing the half block. Press toward the large triangle.
4. Repeat to make six total setting half blocks for the top and bottom edges.
5. To make eight more setting half blocks for the side edges, lay out the triangles and squares (as in Step 1) and sew as above in Step 2, EXCEPT, sew the small square to the left end of the star point unit on the right. Press the seams toward the square and the small triangle. Also, press the seam in the left (shorter) unit toward the star point unit.
6. Sew the star point unit (without the square) to the left short edge of the large triangle. Press toward the large triangle. Sew the second star point unit to the right edge completing the half block. Press toward the large triangle.
7. For the corner blocks (4), lay out one medium triangle (3 3/4" on the short edge), two small triangles and one star point unit. Sew the medium triangle to the appropriate long edge of the star point unit. Press toward the medium triangle. Sew the small triangles to the ends of the unit just formed. Press seams toward the star point unit for two corner units and toward the small triangles for the other two units. Make a total of four corner triangles.

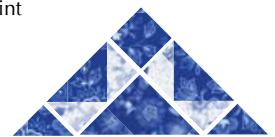


Figure 7 - Half-Block

Assemble the Blocks:

1. Lay out the blocks using the color image as a guide.
2. Using the two long seams in each block as a guide, tilt these seams to the left in the top row. Use the corner and setting triangles with the seams pressed in opposition to the seams in these large blocks.
3. In the next row, tilt the long seams of the large blocks to the right and use the setting triangles that have seams opposing those in the blocks.
4. Continue alternating the position of the seams.
5. Assemble the quilt in diagonal rows. Then sew the rows together.
6. Measure the center of the quilt from top to bottom and cut two side inner borders to this measurement. Sew and press toward the inner border.
7. Measure the center of the quilt from side to side and cut two (upper and lower) borders to this measurement. Sew and press toward the borders.
8. Repeat steps 7 and 8 for the outer border.
9. Quilt as desired. Bind and label to finish.



Figure 8 - Corner Block