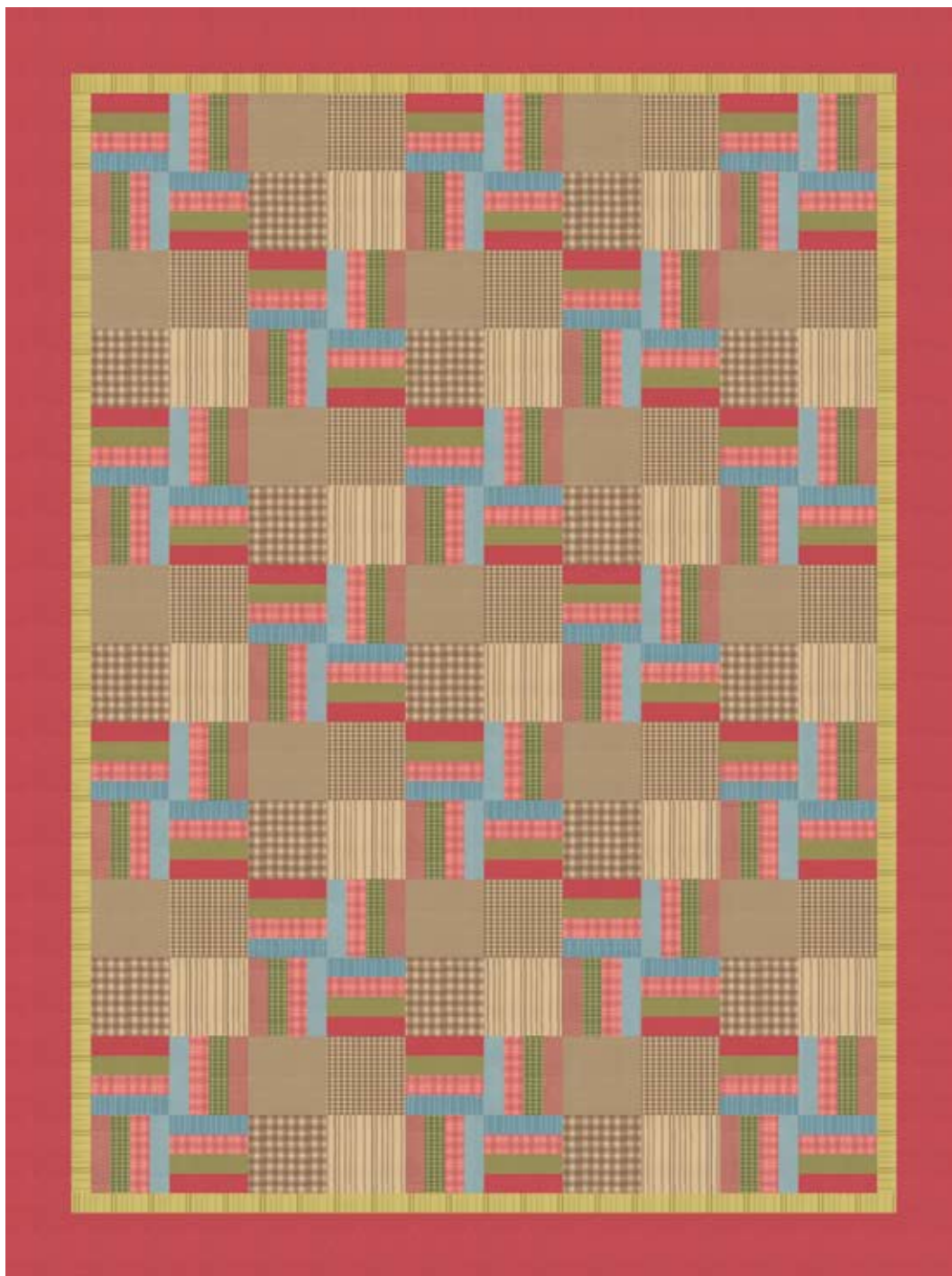


Pattern  
Updated

# Cotton Cupboard

FEATURING FABRICS FROM THE COTTON CUPBOARD COLLECTION BY JOINED AT THE HIP



Finished Size: 48" x 64"

Designed by Avis Shirer of  
Joined at the Hip for Clothworks

Prior to starting this project, please check our web site for any updates to this pattern: [www.clothworkstextiles.com](http://www.clothworkstextiles.com)

## Materials

Yardages based on 42" wide fabric

- 1/3 Yard - Tan Stripe (12071-1)
- 1/3 Yard - Green Stripe (12071-2)
- 1/4 Yard - Blue Stripe (12071-3)
- 1/3 Yard - Tan Plaid (12072-1)
- 1/2 Yard - Pink Plaid (12072-4)
- 1/3 Yard - Tan Solid (12073-1)
- 1/4 Yard - Blue Solid (12073-3)
- 3/4 Yard - Red Solid (12073-5) **UPDATED**
- 1/3 Yard - Tan Check (12074-1)
- 1/4 Yard - Green Check (12074-2)
- 1/4 Yard - Green Mini-Check (12075-2)
- 1/4 Yard - Red Mini-Check (12075-5)
- 1/2 Yard - Binding, Red Solid
- 3 3/4 Yards - Backing

## Cut the Fabrics

WOF = Width of Fabric  
LOF = Length of Fabric

### From the Tan Stripe cut:

- 17 - 4 1/2" squares

### From the Green Stripe cut:

- 5 - 1 1/2" x WOF strips pieced into:
- 2 - 1 1/2" x 56 1/2" strips
- 2 - 1 1/2" x 42 1/2" strips

### From the Blue Stripe cut:

- 4 - 1 1/2" x WOF strips

### From the Tan Plaid cut:

- 17 - 4 1/2" squares

### From the Pink Plaid cut:

- 8 - 1 1/2" x WOF strips

### From the Tan Solid cut:

- 17 - 4 1/2" squares

### From the Blue Solid cut:

- 4 - 1 1/2" x WOF strips

### From the Red Solid cut:

- 5 - 3 1/2" x WOF strips pieced into:
- 2 - 3 1/2" x 58 1/2" strips
- 2 - 3 1/2" x 48 1/2" strips
- 6 - 2 1/2" x WOF binding strips
- 4 - 1 1/2" x WOF strips

### From the Tan Check cut:

- 17 - 4 1/2" squares

### From the Green Check cut:

- 4 - 1 1/2" x WOF strips

### From the Green Mini-Check cut:

- 4 - 1 1/2" x WOF strips

### From the Red Mini-Check cut:

- 4 - 1 1/2" x WOF strips

## Directions

### Assemble the Rail Fence Blocks

1. To make Strip Set A, sew together four 1 1/2" strips together along their long edges in the following order: Red Solid; Green Mini-check; Pink Plaid and Blue Stripe (Fig. 1). Press the seams in one direction. Repeat this process to make a total of four strip sets. Cut these strip sets into thirty-six 4 1/2" Strip Set A segments.
2. To make Strip Set B, sew together four 1 1/2" strips together along their long edges in the following order: Red Mini-check; Green check; Pink Plaid and Blue Solid. Press the seams in one direction. Repeat this process to make a total of four strip sets. Cut these strip sets into thirty-six 4 1/2" Strip Set B segments.
3. Layout two Strip Set A segments and two Strip Set B segments, rotating the blue strip toward the center so that they form a pinwheel (Fig. 2). Sew the pieces in each row together; press toward Strip Set A. Join the rows together to complete a Rail Fence block; press toward the top. The finished block should measure 8 1/2" square, including seam allowances.
4. Repeat Step 3 to make a total of eighteen Rail Fence Blocks

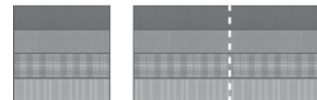


Fig. 1



Fig. 2

### Assemble the Four-Patch Blocks

1. Layout four 4 1/2" tan squares in solid, plaid, stripe and check into a four-patch (Fig. 3). Sew the pieces together in each row; press toward the plaid. Join the rows together to complete a Four-Patch block; press toward the bottom of the block. The finished block should measure 8 1/2" square, including seam allowances.
2. Repeat to make a total of seventeen Four-Patch Blocks.

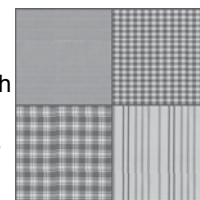


Fig. 3

### Assemble the Quilt

1. Referring to the quilt photo for placement, layout the Rail Fence blocks and Four-Patch blocks into seven rows of five blocks.
2. Sew the pieces in each row together; press toward the Four-Patch blocks. Join the rows together to complete the quilt center.
3. Sew a 1 1/2" x 56 1/2" Green Stripe strip to the long edges of the quilt center; press toward the border. Sew a 1 1/2" x 42 1/2" Green Stripe strip to the top & bottom edges of the quilt center; press toward the border.
4. Sew a 3 1/2" x 58 1/2" Red Solid strip to the long edges of the quilt center; press toward the border. Sew a 3 1/2" x 48 1/2" Red Solid strip to the top & bottom edges of the quilt center; press toward the border.

### Finishing the Quilt

1. Layer the quilt top with the batting and backing and quilt as desired.
2. Prepare and sew the binding to the quilt. Stitch the 2 1/2" Red Solid binding strips end to end. Press the binding in half lengthwise, wrong sides together. Sew the binding to the quilt.

While every attempt has been made to give accurate measurements, yardage requirements, and construction directions, this does not allow for personal variations in measuring, cutting and/or sewing. Clothworks is not responsible for printing errors.