

Seasons

Spring

Featuring fabrics from the **Seasons** collection by Christine Graf
Finished size: 28 1/2" x 40 1/2" *Design by Shelley Robson for Clothworks*



Materials

Yardages based on 42" wide fabric

- 2/3 yard or one panel of the Seasons panel (24060-1)
- 1/2 yd - blue medium floral (24063-1)
- 1/8 yd - gold diamonds (24065-3)
- 1/8 yd - turquoise diamonds (24065-4)
- 1/8 yd - red diamonds (24065-5)
- 1/8 yd - purple diamonds (24065-6)
- 1/2 yd - green diamonds, includes binding (24065-7)
- 1/2 yd - green leaf on blue (24066-1)
- 1/4 yd - gold swirl (24067-3)
- 1 1/4 yards of quilt backing

Cut the Fabrics

WOF = Width of Fabric
LOF = Length of Fabric

Trim the Spring panel by carefully cutting 1/2" outside the narrow (1/8") green frame border. Approximate size: 10 1/2" x 23"

From the blue medium floral cut:

- 2 - 4 1/2" x 40 1/2" rectangles
- 2 - 4 1/2" x 20 1/2" rectangles

From the gold diamonds and purple diamonds cut:

- 6 - 2" x 2" squares
- 6 - 2 3/8" x 2 3/8" squares, bisect each once for 12 triangles

From the red diamonds and turquoise diamonds cut:

- 5 - 2" x 2" squares
- 5 - 2 3/8" x 2 3/8" squares, bisect each once for 10 triangles

From the green diamonds cut:

- 6 - 2" x 2" squares
- 6 - 2 3/8" x 2 3/8" squares, bisect each once for 12 triangles
- 4 - 2 1/2" x WOF strips for binding

From the green leaf on blue cut:

- 28 - 2" x 2" squares
- 28 - 2 3/8" x 2 3/8" squares, bisect each once for 56 triangles
- 2 - 2" x WOF strips cut into:
 - 2 - 2" x 23" rectangles
 - 2 - 2" x 13 1/2" rectangles

From the gold swirl cut:

- 2 - 1 1/2" x 18 1/2" rectangles
- 2 - 1 1/2" x 32 1/2" rectangles

Directions

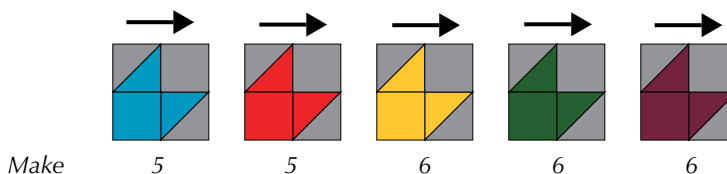
Prior to starting this project, please check our web site for any updates: www.clothworkstextiles.com.

Piecing Instructions: Use 1/4" seam allowances. Press as indicated by arrows or directions.

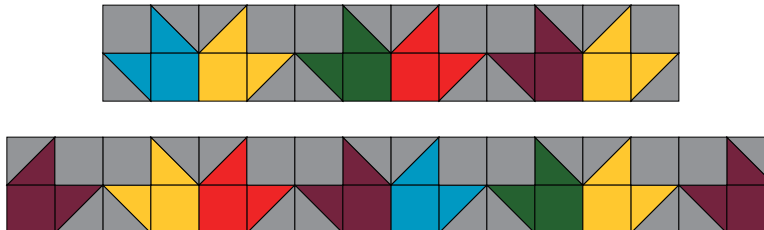
1. Sew the 2" x 23" green leaf on blue rectangles to the sides of the spring panel and press toward the green leaf on blue print. Sew the 2" x 13 1/2" green leaf on blue rectangles to the top and bottom of the panel and press toward the leaf print. This panel unit should measure **12 1/2" x 24 1/2"** for the following borders to fit. **Trim the panel to this dimension.**
2. Sew all of the green leaf on blue triangles to the diamond triangles in all five colors. Make 56 half square triangle units total. Press toward the green leaf on blue print. These squares should measure **2" x 2" square**. Trim to size if necessary.



3. Combine with squares of same fabrics to make the Tulip blocks that measure 3 1/2" square.



4. Make 2 sections of 6 tulips and 2 sections of 8 tulips. Arrange colors as desired. (See front.)



Press seam allowances in one direction. Sew the 8 tulip sections to the sides of the panel unit. Press toward the panel. Sew 6 tulip sections to the top and bottom of panel. Press toward the panel unit.

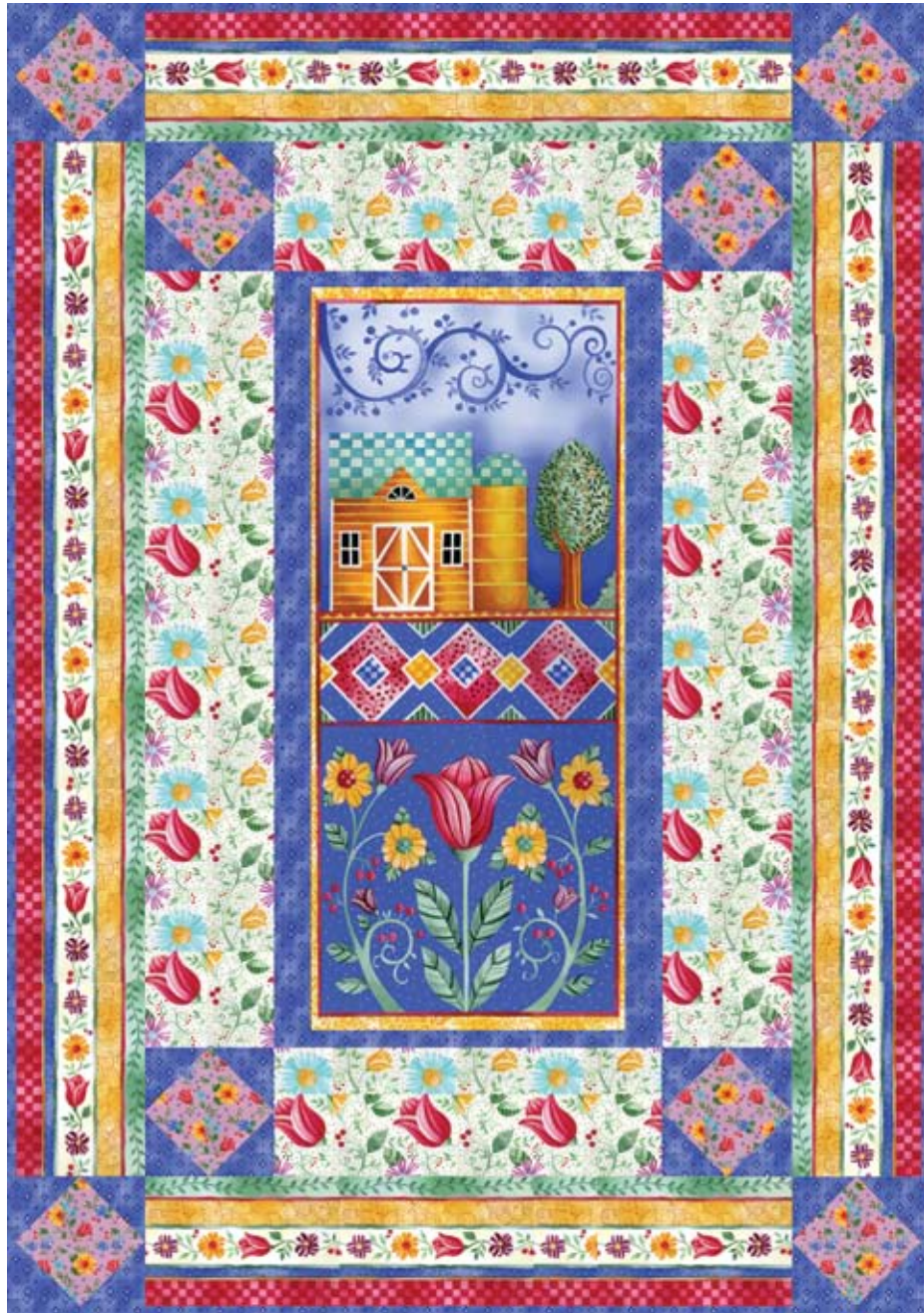
5. Sew 1 1/2" x 18 1/2" gold swirl rectangle to the top and bottom of panel unit. Press toward the gold. Sew 1 1/2" x 32 1/2" gold swirl rectangles to the sides of the panel unit. Press toward the gold.
6. Sew 4 1/2" x 20 1/2" blue medium floral toss rectangle to the top and bottom of panel unit. Press toward the blue. Sew 4 1/2" x 40 1/2" blue medium floral toss rectangles to the sides of the panel unit. Press toward the blue.
7. Layer with batting and backing and baste using favorite method. The finished size is 28 1/2" x 40 1/2". Quilt as desired and bind.

While every attempt has been made to give accurate measurements, yardage requirements, and construction directions, this does not allow for personal variations in measuring, cutting and/or sewing. Clothworks is not responsible for printing errors.

Seasons

Summer

Featuring fabrics from the **Seasons** collection by Christine Graf
Finished size: 28 1/2" x 40 1/2" Design by Shelley Robson for Clothworks



www.clothworkstextiles.com info@clothworkstextiles.com

Materials

Yardages based on 42" wide fabric

- 2/3 yard or one panel of the Seasons panel (24060-1)
- 1 yd of pictoral stripe (24061-1)
- 1/3 yd of cream medium floral (24063-2)
- 1/8 yd of lavender small floral (24064-6)
- 3/4 yd of blue diamonds, includes binding (24065-1)
- 1 1/4 yards of quilt backing

Cut the Fabrics

WOF = Width of Fabric
LOF = Length of Fabric

Trim the Summer panel by carefully cutting 1/2" outside the narrow (1/8") red frame border. Approximate size: 10 1/2" x 23"

From the pictoral stripe, cut lengthwise:

- 2 - 4 1/2" x 32 1/2" rectangles
 - 2 - 4 1/2" x 20 1/2" rectangles
- (make the sides the same repeats and the top and bottom the same repeats)

From the cream medium floral cut:

- 2 - 4 1/2" x 12 1/2" rectangles
- 2 - 4 1/2" x 24 1/2" rectangles

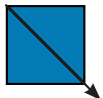
From the lavender small floral cut:

- 8 - 3 1/4" x 3 1/4" squares

From the blue diamonds cut:

- From the blue diamonds cut:
- 2 - 2" x WOF strips cut into:
 - 2 - 2" x 23" rectangles
 - 2 - 2" x 13 1/2" rectangles
 - 4 - 2 1/2" x WOF strips for binding
 - 16 - 3 1/2" squares, bisect each once for 32 triangles. (Figure 1)

Figure 1



Directions

Prior to starting this project, please check our web site for any updates: www.clothworkstextiles.com.

1. Sew the 2" x 23" blue diamonds rectangles to the sides of the spring panel and press toward the blue diamonds. Sew the 2" x 13 1/2" blue diamonds rectangles to the top and bottom of the panel and press toward the blue diamonds. This panel unit should measure **12 1/2" x 24 1/2"** for the following borders to fit. **Trim the panel unit to this dimension.**
2. Sew blue triangles to opposite sides of the lavender squares centering the triangles. Press toward the triangles. Sew triangles to the other two sides of the lavender square to finish the square in a square. Press toward the triangles. **Trim these blocks to measure 4 1/2" square.** Make 8. (Figure 2)

Figure 2



3. Sew the 4 1/2" x 24 1/2" cream rectangles to the sides of the panel unit. Press toward the cream. Sew squares from step two on each end of the 4 1/2" x 12 1/2" cream rectangles, press toward the cream. Sew onto the panel unit and press toward the panel unit. (Figure 3)
4. Sew the 4 1/2" x 32 1/2" pictoral stripe rectangles to each side of the panel unit. Press toward the stripe fabric. Sew the remaining squares onto each end of the 4 1/2" x 20 1/2" pictoral stripe rectangles, press toward the pictoral stripe. Sew onto each end of the panel unit and press toward the stripe.
5. Layer with batting and backing and baste using favorite method. Quilt as desired and bind. The finished size is 28 1/2" x 40 1/2". (Figure 4)

Figure 3

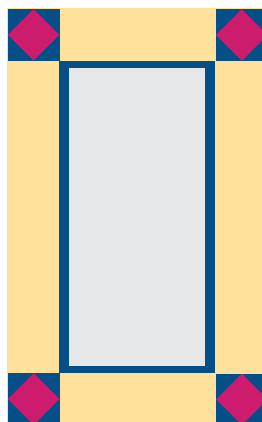
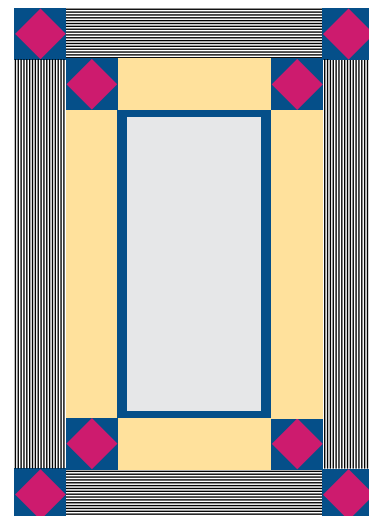


Figure 4



Seasons

Autumn

Featuring fabrics from the **Seasons** collection by Christine Graf
Finished size: 28 1/2" x 40 1/2" *Design by Shelley Robson for Clothworks*



Materials

Yardages based on 42" wide fabric

2/3 yard or one panel of the Seasons panel (24060-1)

5/8 yd - cream trees (24062-2)

1/2 yd - orange diamonds (24065-8)

includes the binding

1/2 yd - multi-color leaf print (24066-7)

1/4 yd - cream swirl (24067-2)

1 1/4 yards of quilt backing

Cut the Fabrics

WOF = Width of Fabric

LOF = Length of Fabric

Trim the Autumn panel by carefully cutting 1/2" outside the narrow (1/8") pink/yellow frame border.

Approximate size: 10 1/2" x 23"

From the cream trees cut:

2 - 5 1/2" x 30 1/2" rectangles

2 - 5 1/2" x 18 1/2" rectangles

From the orange diamonds cut:

2 - 2" x WOF strips cut into:

2 - 2" x 23" rectangles

2 - 2" x 13 1/2" rectangles

4 - 2 1/2" x WOF strips for binding

From the multi-color leaf print cut:

4 - 5 1/2" squares

3 - 2" x WOF strips

From the cream swirl cut:

3 - 2" x WOF strips

Directions

Prior to starting this project, please check our web site for any updates: www.clothworkstextiles.com.

Piecing Instructions: Use 1/4" seam allowances. Press as indicated by arrows or directions.

1. Sew the 2" x WOF multi-color leaf print strips to the 2" x WOF cream swirl strips. Sub-cut sixty 2" sections from these units. (Figure 1)

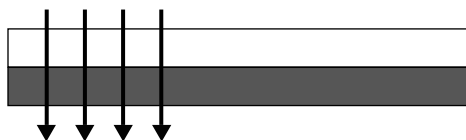
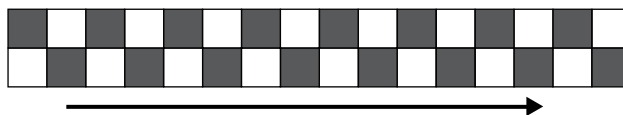


Figure 1
(Cut sixty 2" sections)

2. Make two sections of checker board 12 units long (3 1/2" x 18 1/2") and two sections of checkerboard 16 units long (3 1/2" x 24 1/2") (Figure 2) Be sure to make them exactly as shown!



Figure 2
(Make two of each)



3. Sew the 2" x 23" orange diamonds rectangles to the sides of the spring panel and press toward the orange diamonds print. Sew the 2" x 13 1/2" orange diamonds rectangles to the top and bottom of the panel and press toward the orange diamonds print. This panel unit should measure 12 1/2" x 24 1/2" for the following borders to fit. **Trim the panel unit to this dimension.** Sew the 24 1/2" checkerboard units to the sides of the panel and press toward the orange. Sew the 18 1/2" checkerboard units to the top and bottom of the panel section and press toward the panel. (Figure 3)

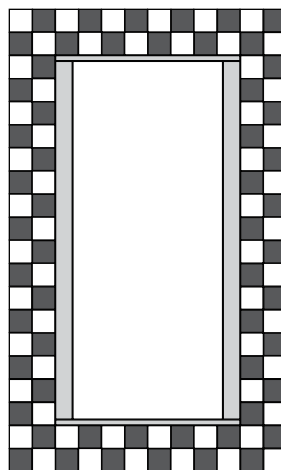


Figure 3

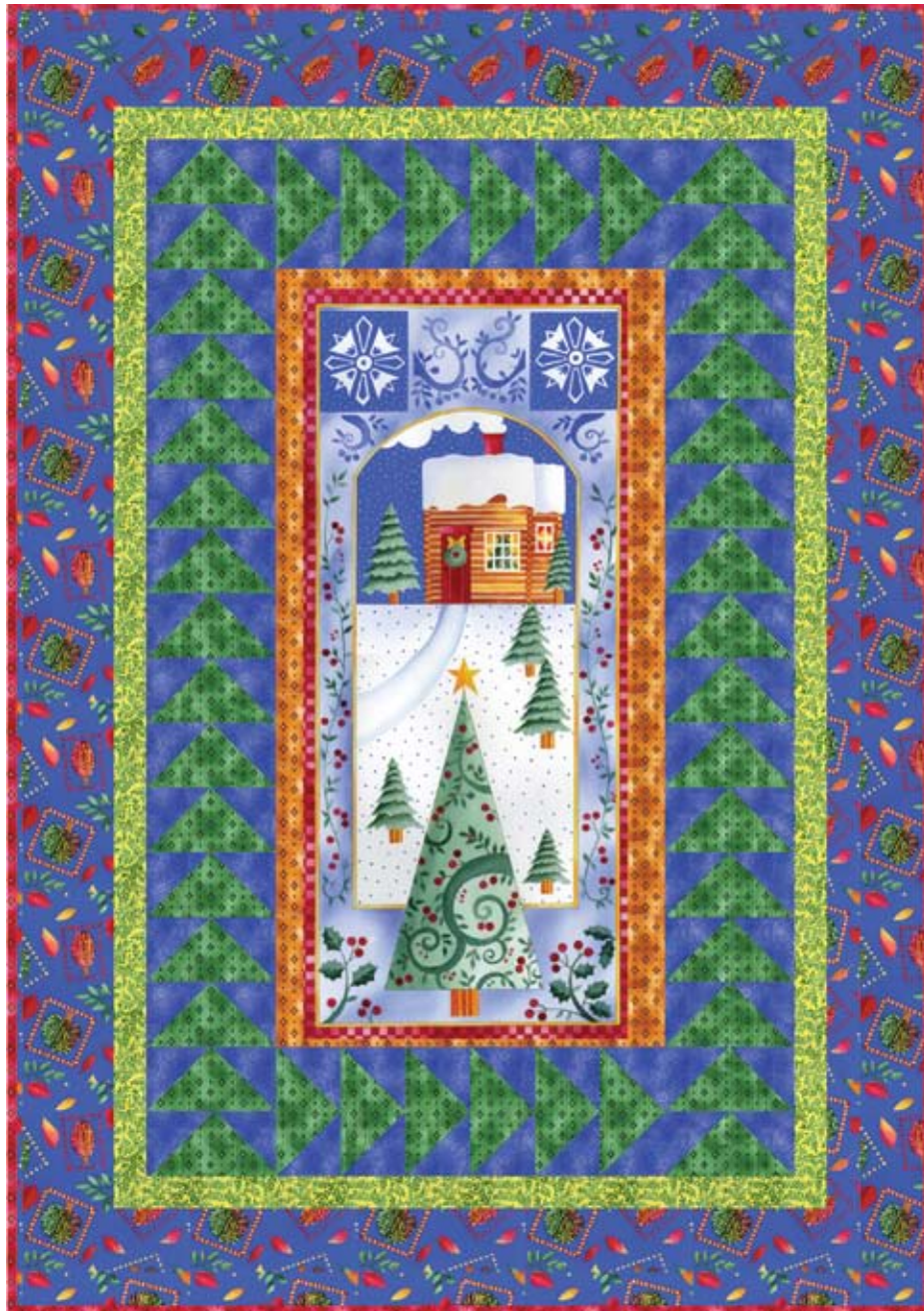
4. Sew the 5 1/2" x 30 1/2" rectangles to the sides of the panel unit. Press toward the large toss border. Sew the 5 1/2" leaf print squares to both ends of the 5 1/2" x 18 1/2" large toss rectangles and press toward the large toss print. Make 2. Sew these to the top and bottom of the panel unit and press toward the border. (See sample on front cover.)
5. Layer with batting and backing and baste using favorite method. Quilt as desired and bind.

While every attempt has been made to give accurate measurements, yardage requirements, and construction directions, this does not allow for personal variations in measuring, cutting and/or sewing. Clothworks is not responsible for printing errors.

Seasons

Winter

Featuring fabrics from the **Seasons** collection by Christine Graf
Finished size: 28 1/2" x 40 1/2" *Design by Shelley Robson for Clothworks*



www.clothworkstextiles.com info@clothworkstextiles.com

Materials

Yardages based on 42" wide fabric

- 2/3 yard or one panel of the Seasons panel (24060-1)
- 1/2 yard of blue trees (24062-1)
- 1/4 yard of orange diamonds (24065-8)
- 3/8 yard of red diamonds (24065-5 for binding)
- 1/2 yard of green diamonds (24065-7)
- 1/4 yard of green leaf on yellow (24066-3)
- 1/2 yard of leaf swirl (24067-1)
- 1 1/4 yards of quilt backing

Cut the Fabrics

WOF = Width of Fabric

LOF = Length of Fabric

Trim the Winter panel by carefully cutting 1/2" outside the narrow (1/8") yellow frame border. Approximate size: 10 1/2" x 23"

From the blue trees cut:

- 2 - 3 1/2" x 40 1/2" rectangles
- 2 - 3 1/2" x 22 1/2" rectangles

From the orange diamonds cut:

- 2 - 2" x WOF strips cut into:
 - 2 - 2" x 23" rectangles
 - 2 - 2" x 13 1/2" rectangles

From the red diamonds cut:

- 4 - 2 1/2" x WOF strips for binding

From the green diamonds cut:

- 44 - 2 1/2" x 4 1/2" rectangles

From the green leaf on yellow leaf print cut:

- 2 - 1 1/2" x 20 1/2" rectangles
- 2 - 1 1/2" x 34 1/2" rectangles

From the blue swirl cut:

- 88 - 2 1/2" x 2 1/2" squares

Directions

Prior to starting this project, please check our web site for any updates: www.clothworkstextiles.com.

Piecing Instructions: Use 1/4" seam allowances. Press as indicated by arrows or directions.

1. Using the 2 1/2" x 4 1/2" green rectangles and the 2 1/2" x 2 1/2" blue squares, place a square on the end of the 2 1/2" x 4 1/2" green rectangle and sew corner to corner. (Draw a line with a pencil or washout marker on the wrong side of the blue square to make this easier.) Trim to 1/4" and press seam allowance toward the blue fabric. Place another blue square on the other end of the rectangle and sew corner to corner. Trim to 1/4" and press seam allowance toward the blue fabric. Make 44 of these 2 1/2" x 4 1/2" units.



2. Make 2 each of the following units: Sew 6 flying geese blocks from step 1 together and press in one direction. Measures 4 1/2" x 12 1/2".

Make 2



Sew 16 flying geese blocks from step 1 together and press in one direction, measures 4 1/2" x 32 1/2".

Make 1



3. Sew the 2" x 23" orange diamonds rectangles to the sides of the spring panel and press toward the orange diamonds print. Sew the 2" x 13 1/2" orange diamonds rectangles to the top and bottom of the panel and press toward the orange diamonds print. This panel unit should measure **12 1/2" x 24 1/2"** for the following borders to fit. **Trim the panel unit to this dimension.**
4. Sew the 12 1/2" flying geese units to the top and bottom of the panel unit, press toward the panel. Sew the 32 1/2" flying geese units to each side of the panel unit, press toward the panel.
5. Sew 1 1/2" x 20 1/2" green leaf on yellow leaf print rectangle to the top and bottom of panel unit, press toward the leaf print. Sew 1 1/2" x 34 1/2" leaf print rectangles to the sides of the panel unit, press toward the leaf print.
6. Sew 3 1/2" x 22 1/2" blue trees rectangle to the top and bottom of panel unit, press toward the outer border. Sew 3 1/2" x 40 1/2" large toss rectangles to the sides of the panel unit, press toward the outer border.
7. Layer with batting and backing and baste using favorite method. Quilt as desired and bind. The finished size is 28 1/2" x 40 1/2".

While every attempt has been made to give accurate measurements, yardage requirements, and construction directions, this does not allow for personal variations in measuring, cutting and/or sewing. Clothworks is not responsible for printing errors.